

PatentNet manual for general users

Webpage

<http://sourceforge.net/projects/patentnet/>

How to run this program

After downloading and unzipping the zip achieve, there are two ways to execute the program:

1. Microsoft .Net

PatentNet depends on the following two packages from Microsoft. Make sure your system have these two packages installed.

[Microsoft .NET Framework Version 2.0 Redistributable](#) or higher 3.0

[Microsoft Visual J# Version 2.0 Redistributable](#)

After .Net Framework and J# installed, you can run the executable file in the directory "PatentNet\bin\Debug\PatentNet.exe"

2. Sun JAVA

PatentNet is totally developed with standard JAVA language. Therefore you can run this software in any OS system with standard JAVA Virtual Machine. Make sure your system have JAVA VM installed

After JAVA VM installed, you can run the Main program in console by typing

"java PatentNet.Main"

This command is case sensitive, and the working directory needs to be on the top of PatentNet, or you will get "java.lang.NoClassDeFoundError"

Snapshot of PatnetNet

So far, this program is only a frontend of Google Patent and esp@cenet

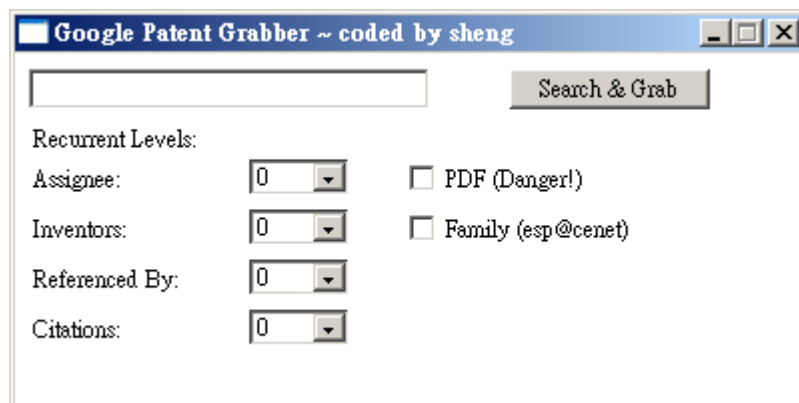
Any word typed in the text field will actually be passed to Google Patent and esp@cenet. Before using this program, you should test the keywords on Google Patent, and see whether the results satisfy your want or not.

The main functional of this program is to automatically download patent documents and their citations. Usually recurrent levels for “Citations” and “Referenced By” are set to “1”, then you can conduct “Citations Network Analysis” further.

Other functions are described below:

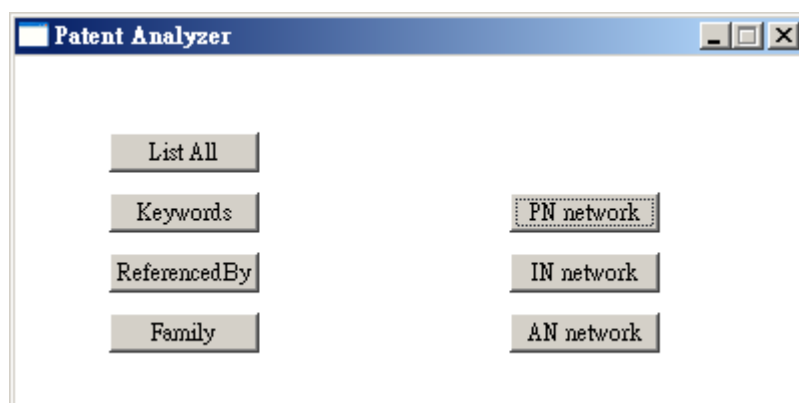
Check PDF choice box to download full text PDF documents also.

Check Family choice box to download patent family from esp@cenet. It is needed if you want to take “Family Analysis” further.



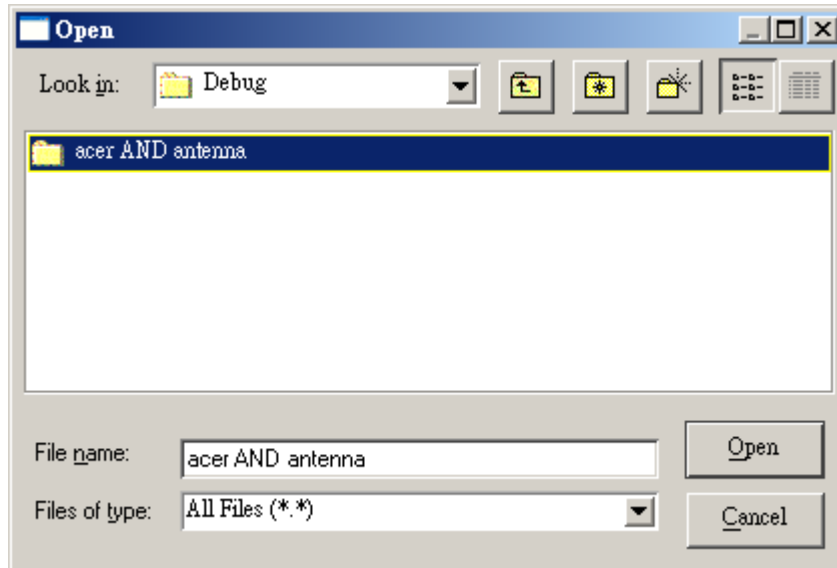
The screenshot shows a window titled "Google Patent Grabber ~ coded by sheng". It features a search input field and a "Search & Grab" button. Below these, there are four "Recurrent Levels" settings, each with a dropdown menu set to "0": "Assignee:", "Inventors:", "Referenced By:", and "Citations:". To the right of these settings are two checkboxes: "PDF (Danger!)" and "Family (esp@cenet)".

Patent Analyser

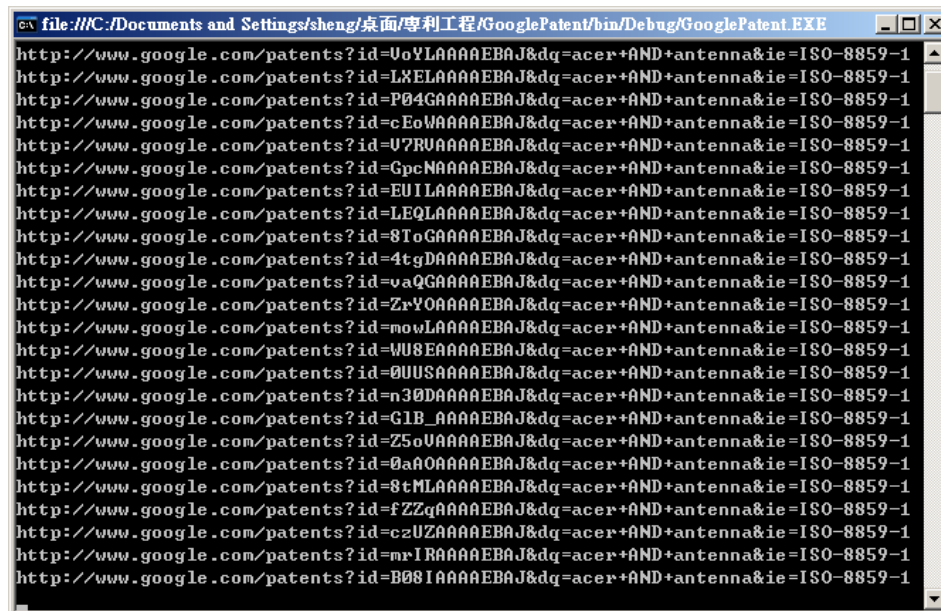


The screenshot shows a window titled "Patent Analyser". It contains two columns of buttons. The left column has four buttons: "List All", "Keywords", "ReferencedBy", and "Family". The right column has three buttons: "PN network", "IN network", and "AN network".

After typing keywords in the text field, press the button “Search&Grab”, A dialog appears and asks you to choose or create a new folder. Using keywords as folder name is fine. Choose the folder and click “Open”, the program will start to download.

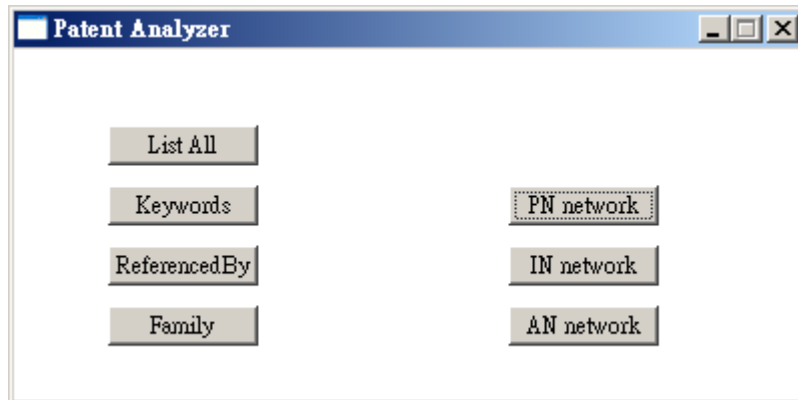


You can check the downloading progress in the console.



Basic Analysis

After all patents downloaded in the specified folder, you can conduct some basic analysis by clicking the function buttons, and choosing the folder containing patents.



List All : You can cut and paste the list to Excel for further processing.

Keywords : Counts the words in downloaded patents and sorts them.

ReferencedBy : Sorts the downloaded patents by “ReferencedBy”

Family : Sorts the downloaded patents by “Family”

PN network : Visualizes “Patent Number Network” of downloaded patents

IN network : Visualizes “Inventor Network” of downloaded patents

AN network : Visualizes “Assignee Network” of downloaded patents